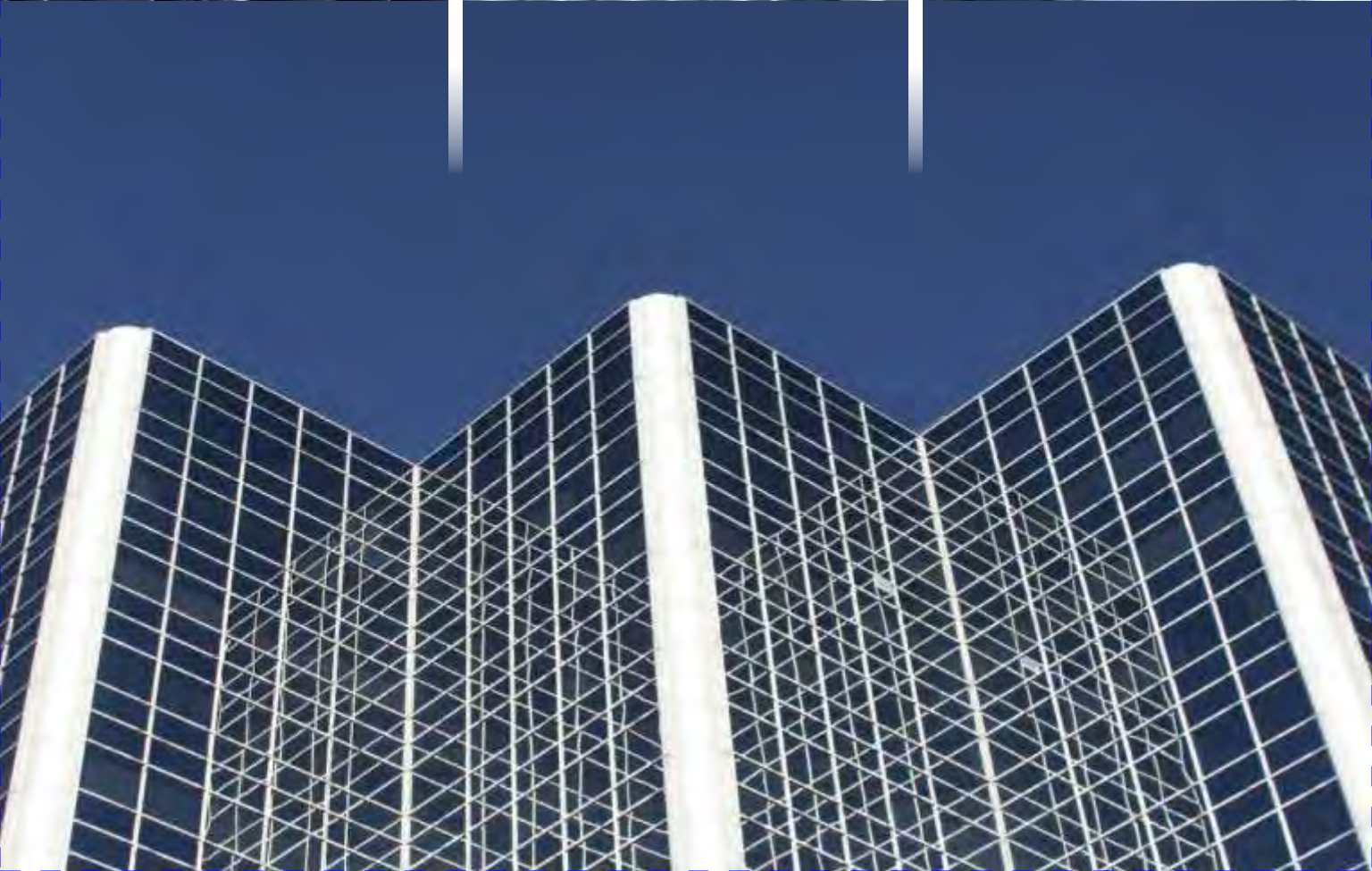




PS STEEL TUBES LIMITED

an ISO 9001:2008 company





Company

PS Steel Tubes Limited is an ISO certified manufacturing company specializing in the production of Oxygen Lancing Pipes, MS ERW Black & Galvanized Pipes/Tubes, Square & Rectangular Hollow Sections, Scaffolding Pipes, Steel Tubes for Idlers for Belt Conveyors, Boiler Tubes and Air Preheater Tubes.

The manufacturing facility of PS Steel Tubes is well equipped with modern Tube Mills and Testing Facilities, with a production capacity of 1,00,000 MT per Annum.

The company has a manufacturing history of over three decades, during which it has achieved phenomenal success as a leading supplier of Lancing Pipes to Integrated Steel Plants, Pig Iron Plants, Ferro-Alloys Units, etc.

The company's products have not only established themselves in the domestic market, but have also been well received overseas.



Quality

Quality is the guiding force at PS Steel and total quality control is an integral part of the manufacturing process from raw material procurement to finished tubes. PS Steel products are rigorously tested in terms of surface finish, weld, diameter, wall thickness, length and weight to conform to quality standards.

Pipes are subjected to Hydro-Testing to ensure against leakages before galvanization and threading. Pipes are also randomly subjected to non-destructive testing to ensure that the welds, tensile and compressive strength meet prescribed quality standards.

Product Applications

Water Pipelines

Water Mains, Sewerage Systems, Industrial Water Lines, Plant Piping.

Agriculture and Irrigation

Deep Tube Wells and Casing Pipes.

Gas Pipelines

Pipe Lines for Natural Gas, LPG and other non-Toxic Gases.

Oil Pipelines

Oil Refinery Piping, Crude Oil Piping, Cross Country Pipeline.

Construction Industry

Scaffolding and Structural.

Chemical Industry

Conveying of Chemicals.

Fire Fighting

Sprinkler Systems.

Power Projects

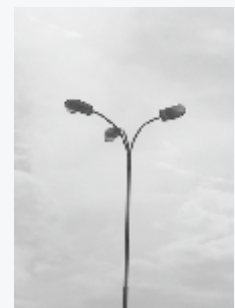
Ash Handling System, LP Piping.

Automobile Industry

Air and Water Flow System, Exhaust Piping.

Miscellaneous

Steel Tubes for Idlers and Troughed Belt Conveyors, Cold Storage Industry, LPG Cylinder Supporting Rings.



PS Steel Tubes also manufactures Tubular Steel Poles for Lighting and Power Transmission under the brand name Moonlight.

www.pssteeltubes.com

Mild Steel Tubes

Steel Tubes for Idlers

Hollow Steel Sections

Steel Tubes - Structural

Lancing Pipes



Product Range

The PS Steel production range comprises of various national and international standards as given below:

Indian Standards

IS 1161	Grade YST 210, 240 and 310 for Structural Purposes
IS 1239 Part 1	For ordinary use in Water, Gas and Air Lines
IS 1978 Part 2	Grade YST 210 and 240 for use in Oil and Natural Gas Industries
IS 3589 Part 3	Grade 330 and 410 for Water, Gas and Sewerage purposes
IS 3601 Part 4	Steel Tubes for Mechanical and Engineering Purposes
IS 4270 Part 5	Steel Tubes for Water Wells [Casing Pipes]
IS 9295 Part 6	For Idlers and Conveyors
IS 10577	Oxygen Lancing Pipes

British Standards

BS 1387 Part 1	For ordinary use in Water and Gas Lines
BS 1139 Part 2	Tubes for Metal Scaffolding
BS 1775 Part 3	For Mechanical, Structural and General Engineering Purposes

American Standards

ASTM [A120] Part 1	For ordinary use in Water, Gas and Air Lines
ASTM [A53] Part 2	For ordinary use in Water, Gas and Air Lines

German Standards

DIN 2439, 2440, 2441 Part 1	For use in Water, Gas and Air Lines
-----------------------------------	-------------------------------------

MILD STEEL TUBES

For general use in Water, Gas and Air Applications

Specifications conforming to IS 1239 [Part I] - 1990

Size - Nominal Bore		Series	Outside Diameter		Thickness		Nominal Weight of Black/Galvanized Tubes			
			Maximum	Minimum	mm	SWG*	Plain Ended		Screwed and Socketed	
mm	Inch		mm	mm			mm	SWG*	Kg/Mtr	Mtr/Tonne
15	1/2	Light	21.40	21.00	2.00	14	0.947	1056	0.956	1046
		Medium	21.80	21.00	2.60	12	1.210	826	1.220	820
		Heavy	21.80	21.00	3.20	10	1.440	694	1.450	690
20	3/4	Light	26.90	26.40	2.30	13	1.380	725	1.390	719
		Medium	27.30	26.50	2.60	12	1.560	641	1.570	637
		Heavy	27.30	26.50	3.20	10	1.870	535	1.880	532
25	1	Light	33.80	33.20	2.60	12	1.980	505	2.000	500
		Medium	34.20	33.30	3.20	10	2.410	415	2.430	412
		Heavy	34.20	33.30	4.00	8	2.930	341	2.950	339
32	1 1/4	Light	42.50	41.90	2.60	12	2.540	394	2.570	389
		Medium	42.90	42.00	3.20	10	3.100	323	3.130	319
		Heavy	42.90	42.00	4.00	8	3.790	264	3.820	262
40	1 1/2	Light	48.40	47.80	2.90	11	3.230	310	3.270	306
		Medium	48.80	47.90	3.20	10	3.560	281	3.600	278
		Heavy	48.80	47.90	4.00	8	4.370	229	4.410	227
50	2	Light	60.20	59.60	2.90	11	4.080	245	4.150	241
		Medium	60.80	59.70	3.60	9	5.030	199	5.100	196
		Heavy	60.80	59.70	4.50	7	6.190	162	6.260	160
65	2 1/2	Light	76.00	75.20	3.20	10	5.710	175	5.830	172
		Medium	76.60	75.30	3.60	9	6.420	156	6.540	153
		Heavy	76.60	75.30	4.50	7	7.930	126	8.050	124
80	3	Light	88.70	87.90	3.20	10	6.720	149	6.890	145
		Medium	89.50	88.00	4.00	8	8.360	120	8.530	117
		Heavy	89.50	88.00	4.80	6	9.900	101	10.400	96
100	4	Light	113.90	113.00	3.60	9	9.750	103	10.000	100
		Medium	115.00	113.10	4.50	7	12.200	82	12.500	80
		Heavy	115.00	113.10	5.40	5	14.500	69	14.800	68
125	5	Medium	140.80	138.50	4.80	6	15.900	63	16.400	61
		Heavy	140.80	138.50	5.40	5	17.900	56	18.400	54
150	6	Medium	166.50	163.90	4.80	6	18.900	53	19.500	51
		Heavy	166.50	163.90	5.40	5	21.300	47	21.900	46

* SWG stands for Standard Wire Gauge

Tolerances

Series	Thickness		Weight			
	+	-	Single Pipe		For Quantities *	
			+	-	+	-
Light	No Limit	8 %	10 %	8 %	5 %	5 %
Medium	No Limit	10 %	10 %	10 %	7.5 %	7.5 %
Heavy	No Limit	10 %	10 %	10 %	7.5 %	7.5 %

* Applicable per Load of 10 Tonnes Minimum

STEEL TUBES

For Idlers for Belt Conveyors

Specifications conforming to IS 9295 - 1983 (Reaffirmed 1995)

Outside Diameter	Thickness	Nominal Weight Plain Ended Tubes		Outside Diameter	Thickness	Nominal Weight Plain Ended Tubes		
		Kg/Mtr	Mtr/Tonne			Kg/Mtr	Mtr/Tonne	
63.50	3.65	5.39	186	139.70	4.50	15.00	67	
	4.50	6.55	153		4.85	16.13	62	
76.10	3.65	6.52	153		5.40	17.89	56	
	4.50	7.95	126		6.30	20.73	48	
88.90	4.05	8.47	118		152.40	4.50	16.40	61
	4.85	10.05	100			4.85	17.65	57
	6.30	12.83	78	5.40		19.58	51	
101.60	4.05	9.74	103	6.30		22.70	44	
	4.85	11.57	86	159.00	4.50	17.10	58	
	6.30	14.80	68		4.85	18.44	54	
108.00	4.05	10.38	96		5.40	20.44	49	
	4.85	12.34	81		6.30	23.72	42	
	6.30	15.80	63	165.10	4.50	17.82	56	
114.30	4.50	12.19	82		4.85	19.17	52	
	5.40	14.50	69		5.40	21.27	47	
	6.30	16.78	60		6.30	24.67	41	
120.00	4.50	12.82	78	168.30	4.50	18.18	55	
	5.40	15.26	66		4.85	19.55	51	
	6.30	17.67	57		5.40	21.69	46	
127.00	4.50	13.60	74		6.30	25.17	40	
	4.85	14.61	68	193.70	5.40	25.07	40	
	5.40	16.19	62		6.30	29.12	34	
	6.30	18.75	53		7.10	32.67	31	
133.00	4.50	14.26	70		219.10	5.40	28.50	35
	4.85	15.33	65	6.30		33.06	30	
	5.40	16.99	59	7.10		37.12	27	
	6.30	19.69	51					

Tolerances

Outside Diameter		Thickness		Weight				Ovality	Eccentricity	Length
				Single Tube		Quantities *				
+	-	+	-	+	-	+	-			
0.8 %	0.8 %	10 %	10 %	10 %	10 %	7.5 %	7.5 %	0.5 mm	5 % of Wall Thickness	Random 4 to 7 Meters

* Applicable per Load of 10 Tonnes Minimum

HOLLOW STEEL SECTIONS

For Structural Use

Specifications as per IS 4923 - 1997

Designation	Thickness	Weight	Designation	Thickness	Weight
mm	mm	Kg/Mtr	mm	mm	Kg/Mtr
Square Hollow Sections [SHS]			Square Hollow Sections [SHS] - continued		
25.00 X 25.00	2.60	1.69	100.00 X 100.00	4.00	11.73
	3.20	1.98		5.00	14.41
30.00 X 30.00	2.60	2.10		6.00	16.98
	3.20	2.49	113.50 X 113.50	4.50	14.99
	4.00	2.94		4.80	15.92
32.00 X 32.00	2.60	2.26		5.40	17.74
	3.20	2.69	6.00	19.53	
	4.00	3.19	125.00 X 125.00	4.50	16.62
35.00 X 35.00	2.60	2.51		5.00	18.33
	3.20	2.99		6.00	21.69
	4.00	3.57	132.00 X 132.00	4.80	18.71
38.00 X 38.00	2.60	2.75		5.40	20.88
	2.90	3.03		6.00	23.01
	3.20	3.29	150.00 X 150.00	5.00	22.26
	3.60	3.63		6.00	26.40
	4.00	3.95		Rectangular Hollow Sections [RHS]	
40.00 X 40.00	2.60	2.92	50.00 X 25.00	2.9	2.98
	3.20	3.49		3.2	3.24
	3.60	3.85	60.00 X 40.00	2.9	4.12
	4.00	4.20		2.9	4.07
45.00 X 45.00	2.60	3.32	66.00 X 33.00	3.6	4.93
	2.90	3.66		4.5	5.95
	3.20	3.99		70.00 X 30.00	2.9
	3.60	4.42	3.2		4.50
	4.50	5.31	80.00 X 40.00	4.0	5.45
49.50 X 49.50	2.90	4.07		2.9	5.03
	3.60	4.93		3.2	5.50
	4.50	5.95	80.00 X 40.00	4.0	6.71
63.50 X 63.50	3.20	5.85		3.2	6.71
	3.60	6.51		96.00 X 48.00	4.0
	4.50	7.93	4.8		9.66
72.00 X 72.00	3.20	6.71	100.00 X 50.00		3.2
	4.00	8.22		4.0	8.59
	4.80	9.66	122.00 X 61.00	3.6	9.67
75.00 X 75.00	3.20	7.01		4.5	11.88
	4.00	8.59		5.4	14.01
	4.90	10.30	127.00 X 50.00	3.6	9.34
88.90 X 88.90	3.60	9.38		4.6	11.69
	4.50	11.52	145.00 X 82.00	4.8	15.92
	4.90	12.44		5.4	17.74
91.50 X 91.50	3.60	9.67	172.00 X 92.00	4.8	18.71
	4.50	11.88		5.4	20.88
	5.40	14.01			

Tolerances

Outside Dimensions all sides, minimum of +/- 0.5mm		Thickness all sizes		Weight				Squareness of Corners	Radii of Corners Outside
				Individual Length		Lot of 10 Tonnes			
+	-	+	-	+	-	+	-		
1 %	1 %	10 %	10 %	10 %	8 %	7.5 %	7.5 %	90° +/- 2°	3t Max where 't' is the thickness

STEEL TUBES

For Structural Purposes

Sheet 1 of 2

Specifications conforming to IS 1161-1998

Nominal Bore	Outside Diameter	Series	Thickness	Nominal Weight - Black and Galvanized Plain Ended Tubes	
				Kg/Mtr	Mtr/Tonne
mm	mm		mm		
15	21.30	Light	2.00	0.947	1056
		Medium	2.60	1.21	826
		Heavy	3.20	1.44	694
20	26.90	Light	2.30	1.38	725
		Medium	2.60	1.56	641
		Heavy	3.20	1.87	535
25	33.70	Light	2.60	1.98	505
		Medium	3.20	2.41	415
		Heavy	4.00	2.93	341
32	42.40	Light	2.60	2.54	394
		Medium	3.20	3.10	323
		Heavy	4.00	3.79	264
40	48.30	Light	2.90	3.23	310
		Medium	3.20	3.56	281
		Heavy	4.00	4.37	229
50	60.30	Light	2.90	4.08	245
		Medium	3.60	5.03	199
		Heavy	4.50	6.19	162
65	76.10	Light	3.20	5.71	175
		Medium	3.60	6.42	156
		Heavy	4.50	7.93	126
80	88.90	Light	3.20	6.72	149
		Medium	4.00	8.36	120
		Heavy	4.80	9.90	101
90	101.60	Light	3.60	8.70	115
		Medium	4.00	9.63	104
		Heavy	4.80	11.45	87
100	114.30	Light	3.60	9.75	103
		Medium	4.50	12.20	82
		Heavy	5.40	14.50	69

Tolerances

Series	Thickness		Weight				Outside Diameter			
			For Single Pipe		For Quantities *		< or = 48.30mm		> 48.30mm	
	+	-	+	-	+	-	+	-	+	-
Light	No Limit	10 %	10 %	8 %	5 %	5 %	0.40 mm	0.80 mm	1%	1%
Medium	No Limit	10 %	10 %	10 %	7.5 %	7.5 %				
Heavy	No Limit	10 %	10 %	10 %	7.5 %	7.5 %				

Note : For Tube sizes up-to and including 25 mm Nominal Bore elongation of 12 % is permissible.

* Applicable per Load of 10 Tonnes Minimum

STEEL TUBES

For Structural Purposes

Sheet 2 of 2

Specifications conforming to IS 1161-1998

Nominal Bore	Outside Diameter	Series	Thickness	Nominal Weight - Black and Galvanized Plain Ended Tubes	
				Kg/Mtr	Mtr/Tonne
mm	mm		mm		
110	127.00	Light	4.50	13.60	74
		Medium	4.80	14.50	69
		Heavy	5.40	16.20	62
125	139.70	Light	4.50	15.00	67
		Medium	4.80	15.90	63
		Heavy	5.40	17.90	56
135	152.40	Light	4.50	16.40	61
		Medium	4.80	17.50	57
		Heavy	5.40	19.60	51
150	165.10	Light	4.50	17.80	56
		Medium	4.80	18.90	53
		Heavy	5.40	21.30	47
	168.30	Light	4.50	18.20	55
		Medium	4.80	19.40	52
		Heavy I	5.40	21.70	46
		Heavy II	6.30	25.20	40
175	193.70	Light	4.80	22.40	45
		Medium	5.40	25.10	40
		Heavy	5.90	27.30	37
200	219.10	Light	4.80	25.40	39
		Medium	5.60	29.50	34
		Heavy	5.90	31.00	32
225	244.50	Heavy	5.90	34.70	29
250	273.00	Heavy	5.90	38.90	26
300	323.90	Heavy	6.30	49.20	20
350	355.60	Heavy	8.00	68.60	15

Tolerances

Series	Thickness		Weight				Outside Diameter			
	+	-	For Single Pipe		For Quantities *		< or = 48.30mm		> 48.30mm	
			+	-	+	-	+	-	+	-
Light	No Limit	10 %	10 %	8 %	5 %	5 %	0.40 mm	0.80 mm	1%	1%
Medium	No Limit	10 %	10 %	10 %	7.5 %	7.5 %				
Heavy	No Limit	10 %	10 %	10 %	7.5 %	7.5 %				

Note : For Tube sizes up-to and including 25 mm Nominal Bore elongation of 12 % is permissible.

* Applicable per Load of 10 Tonnes Minimum

LANCING PIPES

For use in Blast Furnace and Gas Transportation

Specifications as per IS 10577 - 1982

Nominal Bore	Series	Outside Diameter		Thickness	Mass of Black Tube			
		Maximum	Minimum		Plain Ended		Screwed and Socketed	
		mm	mm	mm	Kg/Mtr	Mtr/Tonne	Kg/Mtr	Mtr/Tonne
6	Light	10.10	9.70	1.80	0.361	2770	0.364	2747
	Medium	10.60	9.80	2.00	0.407	2457	0.410	2439
	Heavy	10.60	9.80	2.65	0.493	2028	0.496	2016
8	Light	13.60	13.20	1.80	0.517	1934	0.521	1919
	Medium	14.00	13.20	2.35	0.650	1538	0.654	1529
	Heavy	14.00	13.20	2.90	0.769	1300	0.773	1294
10	Light	17.10	16.70	1.80	0.674	1484	0.680	1471
	Medium	17.50	16.70	2.35	0.852	1174	0.858	1166
	Heavy	17.50	16.70	2.90	1.020	980	1.030	971
15	Light	21.40	21.00	2.00	0.952	1050	0.961	1041
	Medium	21.80	21.00	2.65	1.220	820	1.230	813
	Heavy	21.80	21.00	3.25	1.450	690	1.460	685
20	Light	26.90	26.40	2.35	1.410	709	1.420	704
	Medium	27.30	26.50	2.65	1.580	633	1.590	629
	Heavy	27.30	26.50	3.25	1.900	526	1.910	524
25	Light	33.80	33.20	2.65	2.010	498	2.030	493
	Medium	34.20	33.30	3.25	2.440	410	2.460	407
	Heavy	34.20	33.30	4.05	2.970	337	2.990	334

Tolerances

Series	Thickness		Mass			
	+	-	Single Pipe		For quantities *	
			+	-	+	-
Light	No Limit	8 %	No Limit	8 %	No Limit	8 %
Medium	No Limit	10 %	No Limit	10 %	No Limit	7.5 %
Heavy	No Limit	10 %	No Limit	10 %	No Limit	7.5 %

* Applicable per Load of 10 Tonnes Minimum



manufacturing reliability

www.pssteeltubes.com

26, Akash Ganga Complex
Supela, Bhilai 490023
Chhattisgarh, India

Tel

91 788 4035222

91 788 4060222

91 788 4030202

91 788 4037538

Fax

91 788 2223543

91 788 4031893

e-Mail

info@pssteeltubes.com

PS Steel Tubes Limited